

[Search for Housing](#)

[Print Page](#)

Mod Rehab Program - Homeless Requirement - Studios Only Project Based Voucher (PBV) Housing Program

Belray Apartments

3150 N Racine Ave Chicago, IL 60657

Ready to Apply?

Ready to Apply?

1. Review Program Types and Eligibility

Please read important information about our program types and your eligibility.

- [Program types](#)
- [Eligibility requirements](#)
- [Household size to number of bedrooms](#)

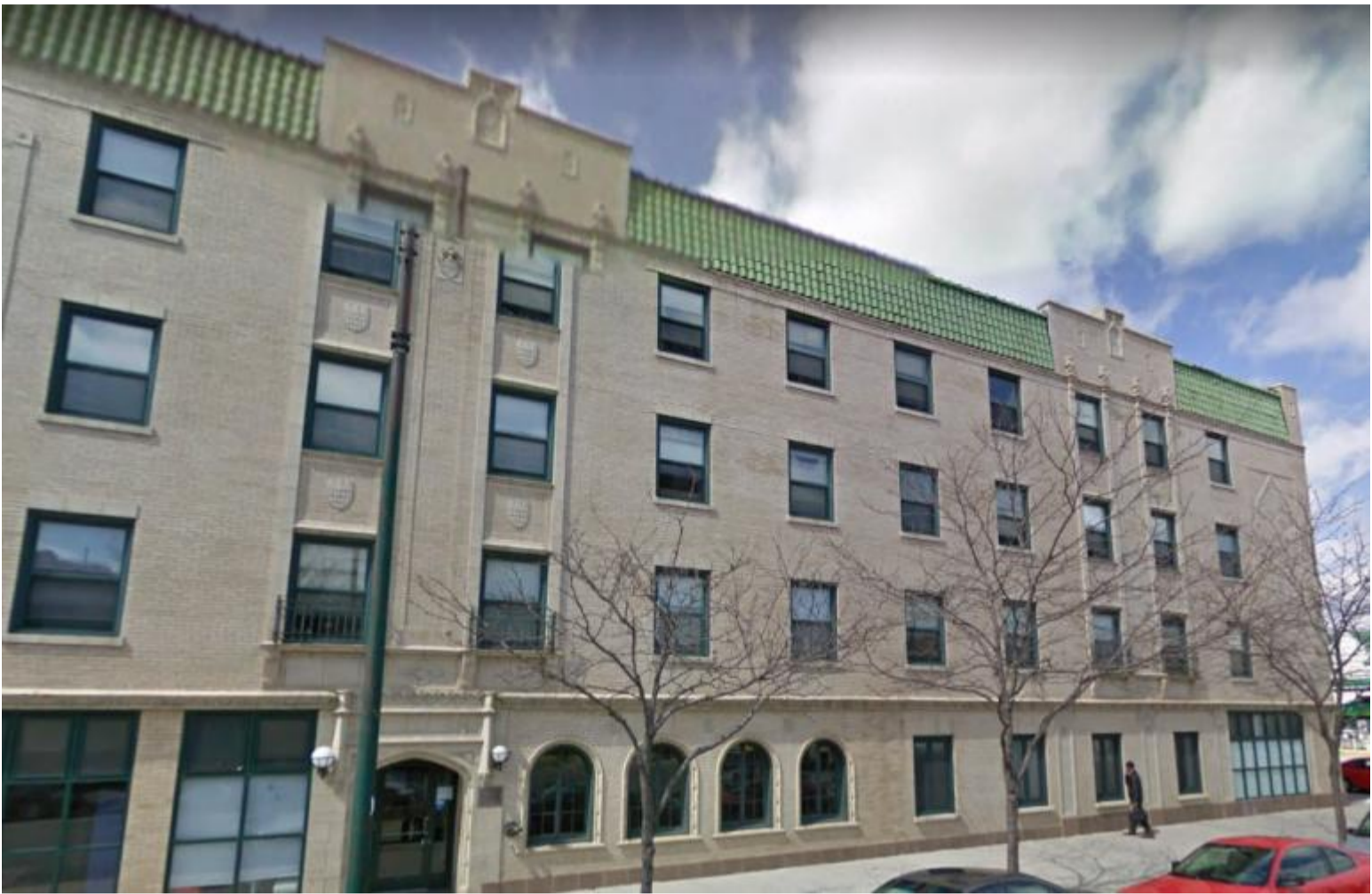
2. Fill out Application

Start your waitlist application process.

[Apply](#)

Do you have questions? Read our [frequently asked questions](#) to find the answers you need.

Do you have questions? Read our [frequently asked questions](#) to find the answers you need.



Target Audience

Supportive Homeless Individual

Community Area

Lake View

Closest Intersection

N Racine Ave & W Belmont Ave

Estimated wait time for eligibility screening

- 0-1 Bedroom
5 - 10 years
- 2 Bedrooms
N/A
- 3 Bedroom
N/A
- 4 Bedroom
N/A
- 5 Bedroom
N/A
- 6 Bedroom
N/A

Property Description

Belray Apartments is a 70-unit development located in Chicago's Lake View community. * Rental Assistance is provided to 70 units through HUD's Moderate Rehab program. * Tenants are able to move to apply to a Public Housing, Project Based Voucher, or Housing Choice Voucher unit through a new waitlist application. * Applicants must be a single-person household, with documented homelessness, and an income below \$39,250 (2024 HUD income updated annually). * Applicants must be current with Chicago Coordinated Entry (See www.AllChicago.org/Coordinated-Entry-System) Applicants must agree to share their information with other homeless agencies to gain preference. Preference is checked monthly. * Note: Building requirements are established by individual property and not by the CHA.

Unit Type

Bedroom Size	Standard Apartments	Accessible Apartments	Total Number of Apartments
Studio	66	4	70

Additional Information

Information Title	Information Description
Gas Bill	No, it is not the resident's responsibility to pay for this utility
Electric Bill	No, it is not the resident's responsibility to pay for this utility
Water Bill	No, it is not the resident's responsibility to pay for this utility
Elevator	Yes, there is an elevator at this property
Application Fee	There is no application fee
Income Eligibility	Maximum income 0-50% of area median income (AMI). Click here to view the AMI income limits by household size.
Work Requirement	N/A
Drug Screening	There is drug screening

Screening measures include a criminal background check and may include a credit check, home visit, etc.

Helpful Resources

We have provided a collection of helpful resources for you to find important information about this community and its surroundings.

- [Schools](#)
- [Libraries](#)
- [Transportation Routes](#)
- [Park District](#)
- [Grocery Stores, Restaurants](#)

Featured Properties

Other Properties You Might Want to Review

Featured properties may have shorter wait times, be new to CHA's portfolio, or serve a specific population.